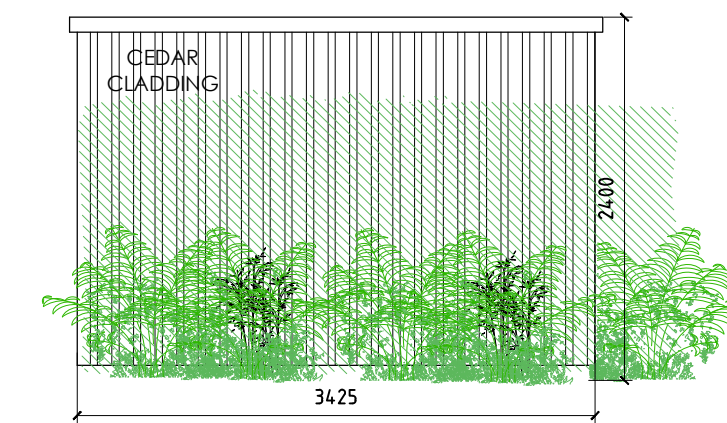
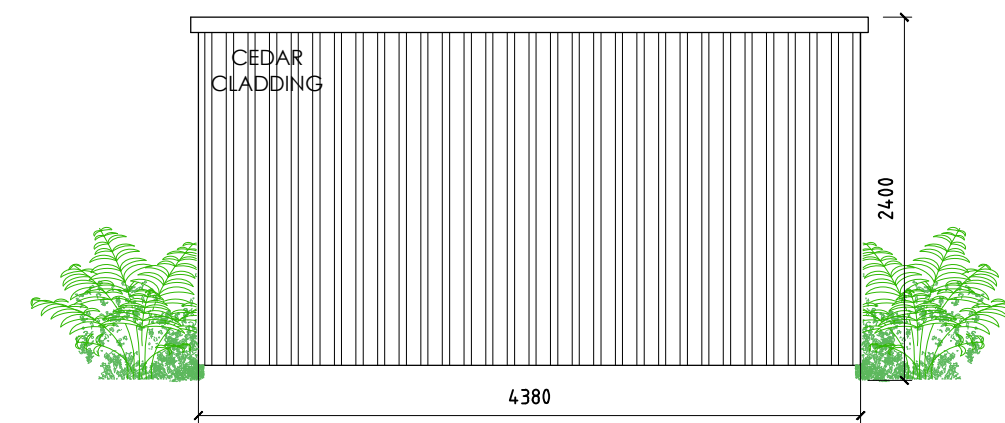
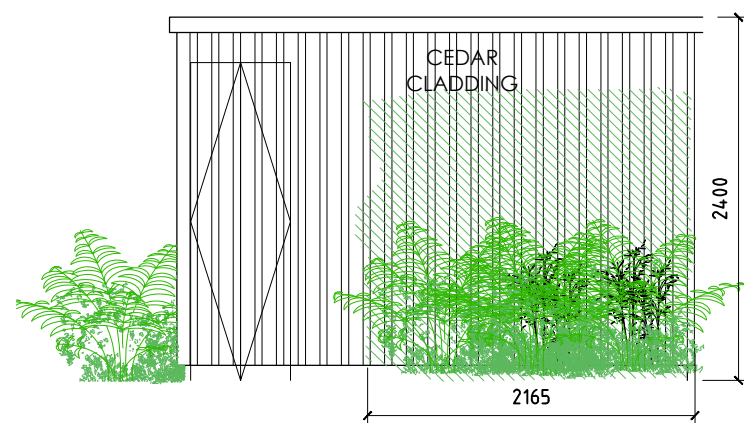
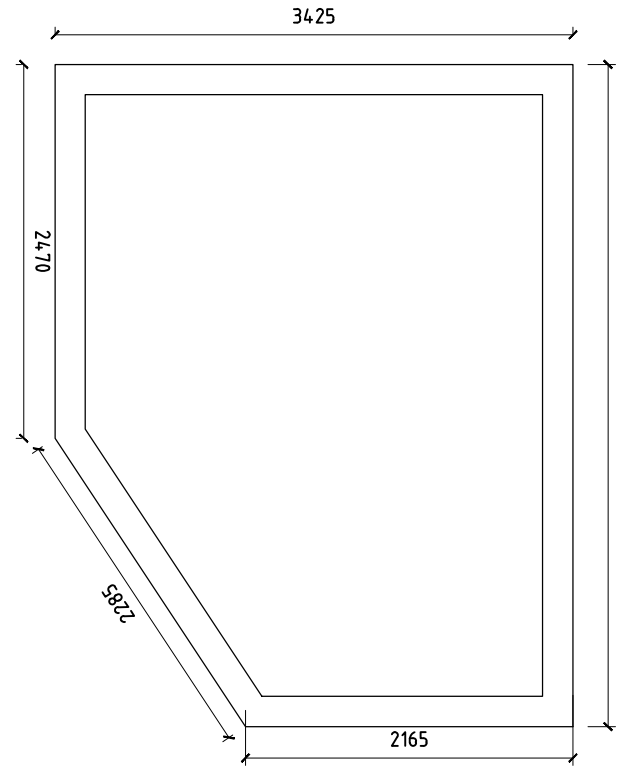
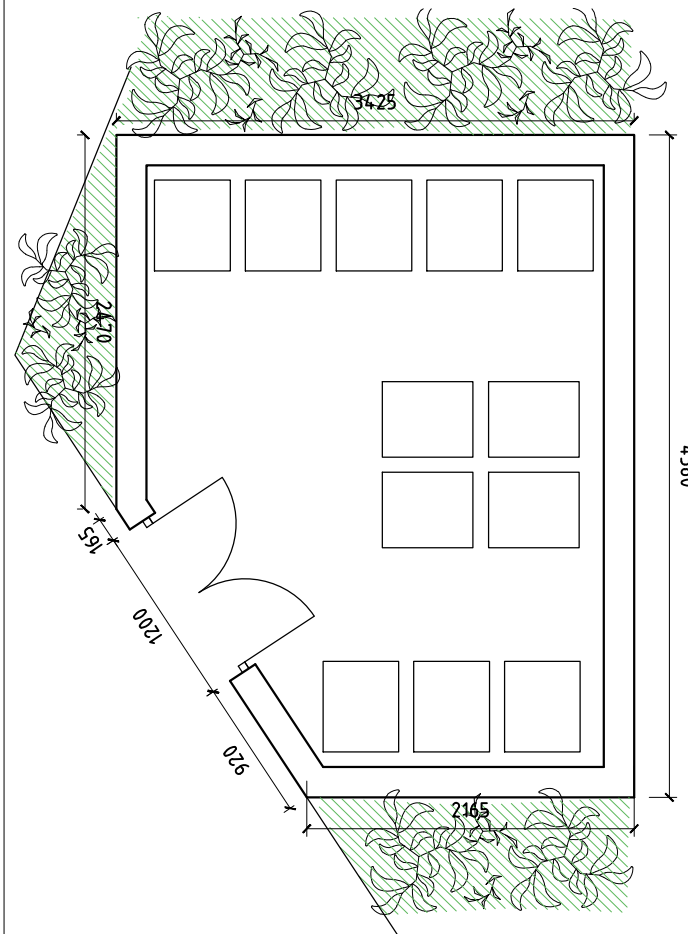


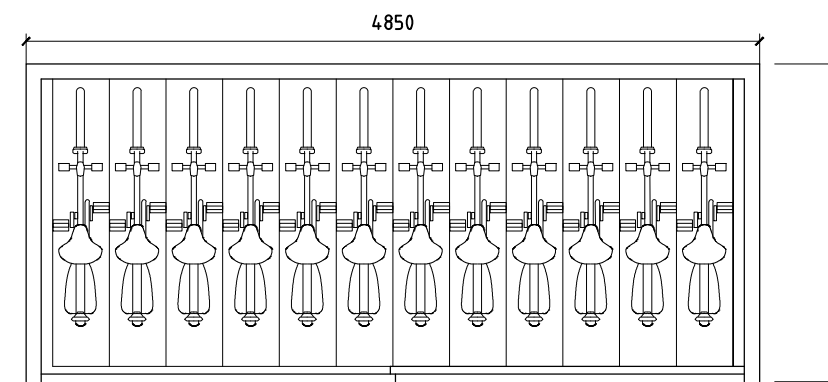
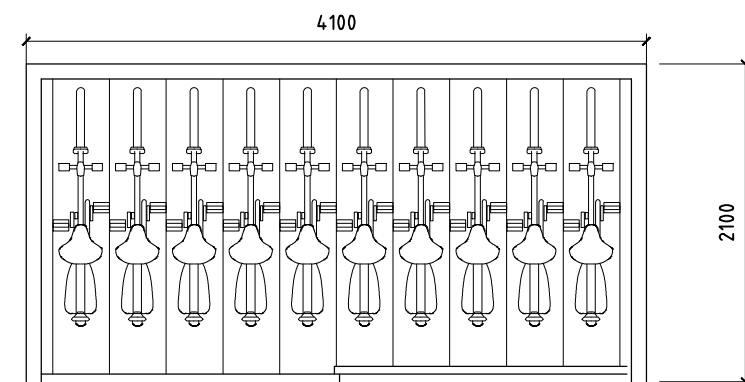
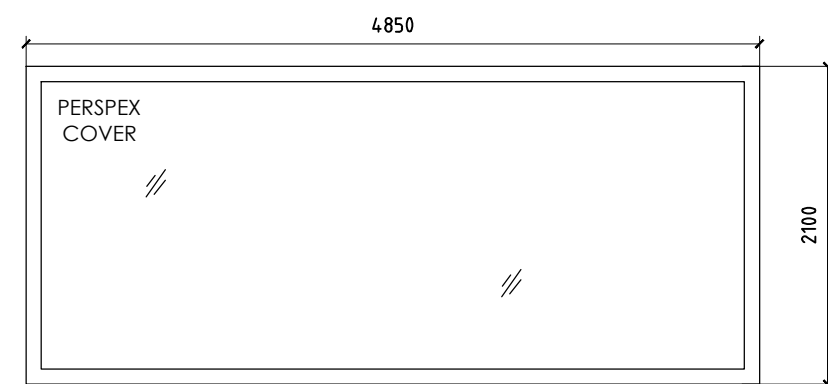
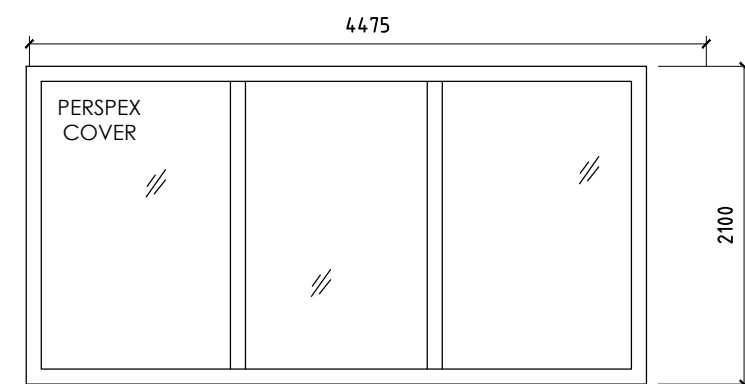
01 BIN STORE 1 - FLOOR AND ROOF PLAN AND ELEVATIONS

1:50 @ A1



02 BIN STORE 2 - FLOOR AND ROOF PLAN AND ELEVATIONS

1:50 @ A1



03 BICYCLE STORE 1

20 no. bicycles (two tiers) and security gate
1:50 @ A1



04 BICYCLE STORE 2

24 no. bicycles (two tiers) and security gate
1:50 @ A1

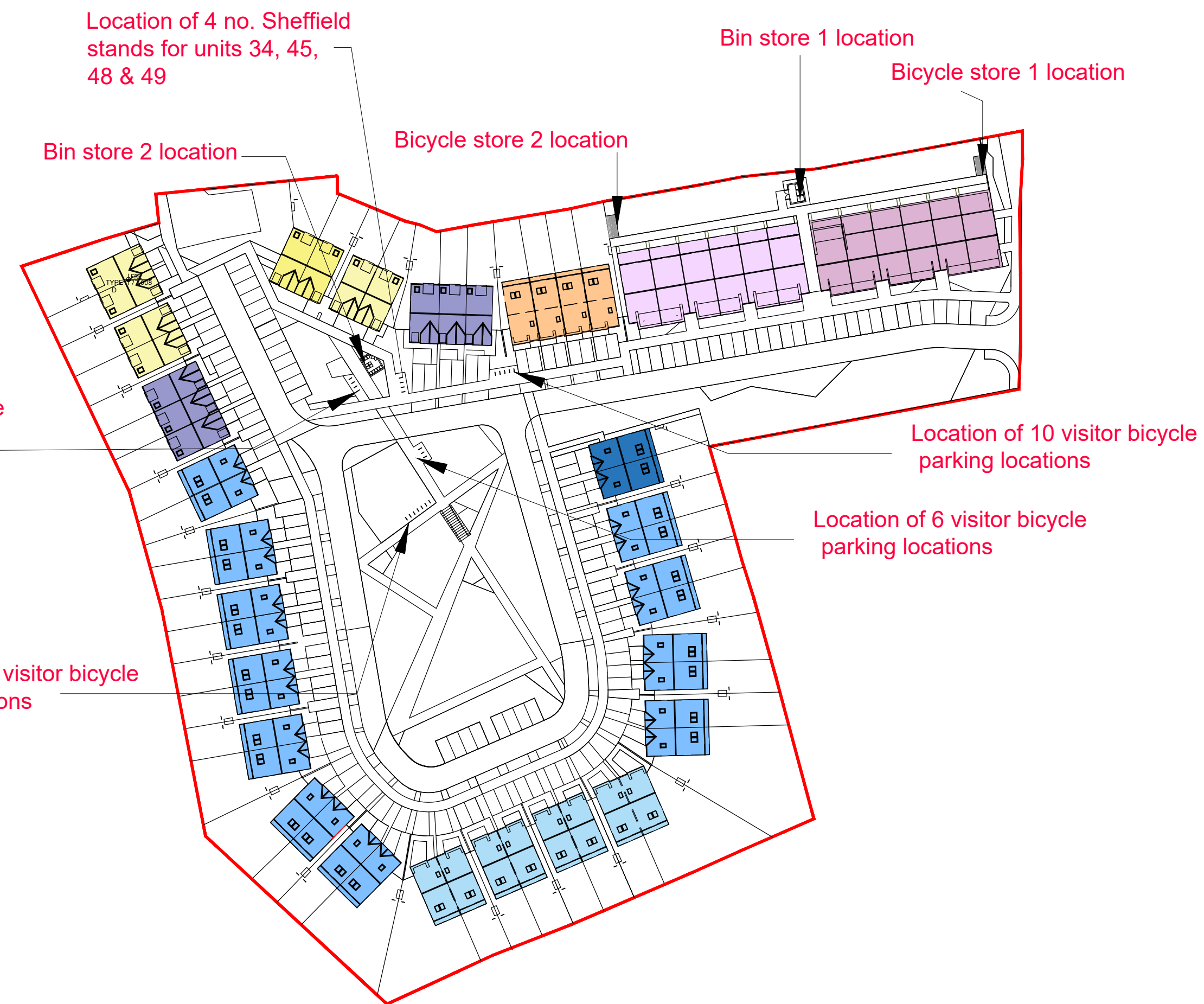


05 BICYCLE STORE IMAGE

Blke dook solutions 2-tier Bristol bicycle store

06 BICYCLE RACK IMAGE

Sheffield Stand - visitor bicycle storage and house bicycle storage (not blocks H&J)



07 KEY PLAN

STATUS :

PLANNING

THIS DRAWING HAS BEEN PREPARED SOLELY FOR THE PURPOSE OF DISCUSSION. THIS DRAWING IS NOT TO BE RELIED UPON FOR CONSTRUCTION AND NO GUARANTEE IS GIVEN AS TO ITS SUITABILITY FOR CONSTRUCTION.

NOTES :

PLEASE REFER TO :
DRAWING NO. PL-400 SITE LANDSCAPING
MASTERPLAN AND PL -401
FOR LOCATIONS OF BOUNDARY TREATMENTS

Bin store1

Communal bin storage for duplex block J&H

Bin store2

Wheelie bin storage for units 34, 45, 48 & 49 with no side access to rear gardens.
To contain 12 wheelie bins, 3 per unit

Bicycle Storage rack 1

Secure bicycle storage facility.
19 no bedrooms, require 19 bicycle storage spaces.
Rack provides 1 no. additional bicycle storage space.

Bicycle Storage rack 2

Secure bicycle storage facility.
24 no bedrooms, require 24 bicycle storage spaces.

Sheffield Stands

Located in rear gardens of units with side access.
Units 34, 45, 48 & 49 are located in communal areas as no side access to rear gardens.
38 no. visitor bicycle spaces allowed, dispersed throughout development

A	18.2.22	DM	ISSUED FOR PLANNING	DM
REV	DATE	BY	DESCRIPTION	CHKD

NOTE © This drawing is copyright. Figured dimensions only to be taken from this drawing. All dimensions to be checked on site. Architects to be informed immediately of any discrepancies before work proceeds.

DOUGLAS WALLACE

1 Grantham Street, Dublin 8, D08 A49Y, Ireland
T: +353 (0)1 478 7500 · E: info@douglaswallace.com · W: www.douglaswallace.com

CLIENT NOVOT HOLDINGS LIMITED

PROJECT PROPOSED RESIDENTIAL DEVELOPMENT AT CAIRNS ROAD, SLIGO

TITLE PROPOSED BINS AND BICYCLE STORAGE

PROJ. NO.	DRG. NO.	REVISION	
5470	PL - 405	A	
DRAWN	SCALE	CHECKED BY	DATE
KD	1:25 @ A1	DM	JAN. / 2021